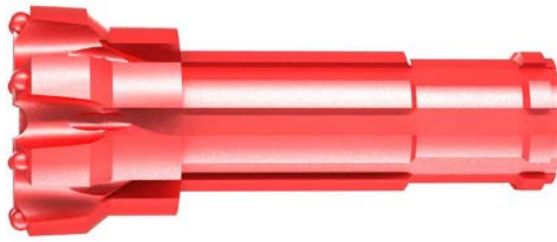
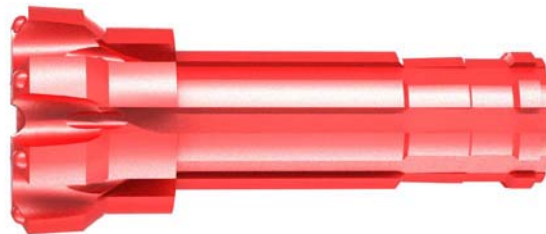


RE 531



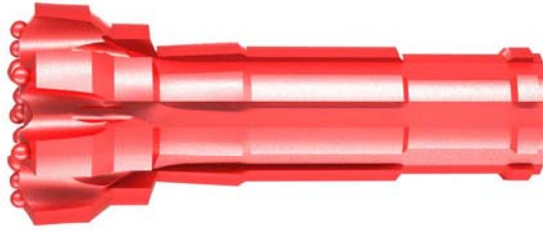
Diameter		Gauge Buttons	No × Button diameter (mm)			Button angle°	Flushing holes	Shroud Diameter	Weight (kg)	Part No
mm	Inch		Front Buttons							
			Flat Face	Concave Face	Convex Face					
85	3 3/8	6×14	4×12	2×10	/	35	2	83	3.8	RE531-85
90	3 1/2	6×14	4×12	2×10	/	35	2	88	4.0	RE531-90
95	3 3/4	6×14	4×12	2×12	/	35	2	93	4.1	RE531-95
100	4	6×14	4×12	2×12	/	35	2	98	4.3	RE531-100

RE 004



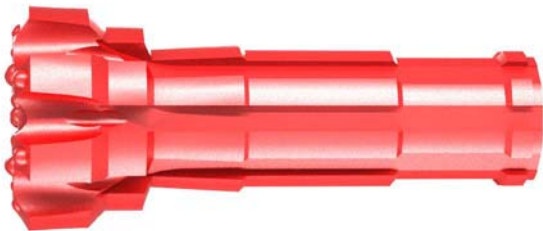
Diameter		Gauge Buttons	No × Button diameter (mm)			Button angle°	Flushing holes	Shroud Diameter	Weight (kg)	Part No
mm	Inch		Front Buttons							
			Flat Face	Concave Face	Convex Face					
115	4 1/2	8×14	4×14	2×14	/	35	2	113	11.8	RE004-115
115	4 1/2	8×14	6×14	2×14	/	35	2	113	11.9	RE004-115-1
121	4 3/4	8×14	4×14	3×13	/	35	2	119	12.0	RE004-121
121	4 3/4	8×14	6×14	3×13	/	35	2	119	12.1	RE004-121-1
124	4 7/8	8×14	4×14	3×13	/	35	2	122	12.2	RE004-124
124	4 7/8	8×14	6×14	3×13	/	35	2	122	12.3	RE004-124-1

RE 542



Diameter		Gauge Buttons	No × Button diameter (mm)			Button angle°	Flushing holes	Shroud Diameter	Weight (kg)	Part No
mm	Inch		Front Buttons							
			Flat Face	Concave Face	Convex Face					
120	4 3/4	8×14	4×14	3×13	/	35	2	118	10.5	RE542-120
120	4 3/4	8×14	6×14	3×13	/	35	2	118	10.6	RE542-120-1
127	5	8×14	4×14	3×14	/	35	2	125	10.9	RE542-127
127	5	8×14	6×14	3×14	/	35	2	125	11.0	RE542-127-1
130	5 1/8	8×16	4×14	3×14	/	35	2	128	11.1	RE542-130
130	5 1/8	8×16	6×14	3×14	/	35	2	128	11.2	RE542-130-1

RE 543



Diameter		Gauge Buttons	No × Button diameter (mm)			Button angle°	Flushing holes	Shroud Diameter	Weight (kg)	Part No
mm	Inch		Front Buttons							
			Flat Face	Concave Face	Convex Face					
127	5	8×14	4×14	3×14	/	35	2	125	10.9	RE543-127
127	5	8×14	6×14	3×14	/	35	2	125	11.0	RE543-127-1
130	5 1/8	8×16	4×14	3×14	/	35	2	128	11.1	RE543-130
130	5 1/8	8×16	6×14	3×14	/	35	2	128	11.2	RE543-130-1
133	5 1/4	8×16	4×14	3×14	/	35	2	131	11.3	RE543-133
133	5 1/4	8×16	6×14	3×14	/	35	2	131	11.4	RE543-133-1

RE 545



Diameter		Gauge Buttons	No × Button diameter (mm)			Button angle°	Flushing holes	Shroud Diameter	Weight (kg)	Part No
mm	Inch		Front Buttons							
			Flat Face	Concave Face	Convex Face					
130	5 1/8	8×16	4×14	3×14	/	35	2	128	11.1	RE545-130
130	5 1/8	8×16	6×14	3×14	/	35	2	128	11.2	RE545-130-1
134	5 1/4	8×16	4×16	3×14	/	35	2	132	11.3	RE545-134
134	5 1/4	8×16	6×16	3×14	/	35	2	132	11.4	RE545-134-1
140	5 1/2	8×16	4×16	3×14	/	35	2	138	11.7	RE545-140
140	5 1/2	8×16	6×16	3×14	/	35	2	138	11.8	RE545-140-1

PR 40



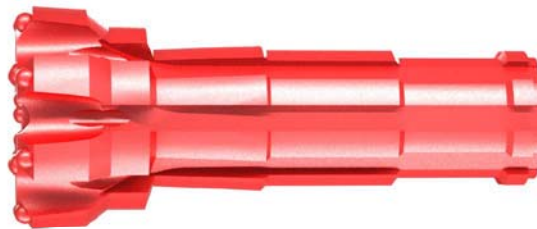
Diameter		Gauge Buttons	No × Button diameter (mm)			Button angle°	Flushing holes	Shroud Diameter	Weight (kg)	Part No
mm	Inch		Front Buttons							
			Flat Face	Concave Face	Convex Face					
130	5 1/8	8×16	4×14	3×14	/	35	2	128	14.5	PR40-130
130	5 1/8	8×16	6×14	3×14	/	35	2	128	14.6	PR40-130-1
133	5 1/4	8×16	4×16	3×14	/	35	2	131	14.7	PR40-133
133	5 1/4	8×16	6×16	3×14	/	35	2	131	14.8	PR40-133-1
140	5 1/2	8×16	4×16	3×14	/	35	2	138	15.0	PR40-140
140	5 1/2	8×16	6×16	3×14	/	35	2	138	15.1	PR40-140-1

PR 52



Diameter		Gauge Buttons	No × Button diameter (mm)			Button angle°	Flushing holes	Shroud Diameter	Weight (kg)	Part No
mm	Inch		Front Buttons							
			Flat Face	Concave Face	Convex Face					
140	5 1/2	8×16	4×16	3×14	/	35	2	138	16.6	PR52-140
140	5 1/2	8×16	6×16	3×14	/	35	2	138	16.7	PR52-140-1
143	5 5/8	8×16	4×16	3×14	/	35	2	141	16.8	PR52-143
143	5 5/8	8×16	6×16	3×14	/	35	2	141	16.9	PR52-143-1
146	5 3/4	8×16	4×16	3×14	/	35	2	144	17.0	PR52-146
146	5 3/4	8×16	6×16	3×14	/	35	2	144	17.1	PR52-146-1

PR 54



Diameter		Gauge Buttons	No × Button diameter (mm)			Button angle°	Flushing holes	Shroud Diameter	Weight (kg)	Part No
mm	Inch		Front Buttons							
			Flat Face	Concave Face	Convex Face					
140	5 1/2	8×16	4×16	3×14	/	35	2	138	19.0	PR54-140
140	5 1/2	8×16	6×16	3×14	/	35	2	138	19.1	PR54-140-1
143	5 5/8	8×16	4×16	3×14	/	35	2	141	19.2	PR54-143
143	5 5/8	8×16	6×16	3×14	/	35	2	141	19.3	PR54-143-1
146	5 3/4	8×16	4×16	3×14	/	35	2	144	19.4	PR54-146
146	5 3/4	8×16	6×16	3×14	/	35	2	144	19.5	PR54-146-1

RE 547



Diameter		Gauge Buttons	No × Button diameter (mm)			Button angle°	Flushing holes	Shroud Diameter	Weight (kg)	Part No
mm	Inch		Front Buttons							
			Flat Face	Concave Face	Convex Face					
140	5 1/2	8×16	4×16	3×14	/	35	2	138	14.3	RE547-140
140	5 1/2	8×16	6×16	3×14	/	35	2	138	14.4	RE547-140-1
143	5 5/8	8×16	4×16	3×14	/	35	2	141	14.5	RE547-143
143	5 5/8	8×16	6×16	3×14	/	35	2	141	14.6	RE547-143-1
146	5 3/4	8×16	4×16	3×14	/	35	2	144	14.8	RE547-146
146	5 3/4	8×16	6×16	3×14	/	35	2	144	14.9	RE547-146-1

RC 6A



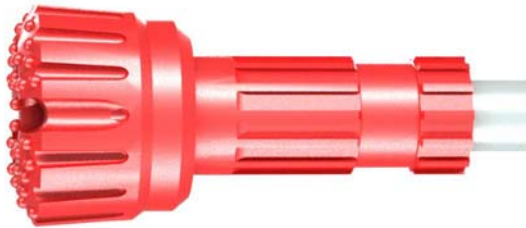
Diameter		Gauge Buttons	No × Button diameter (mm)			Button angle°	Flushing holes	Shroud Diameter	Weight (kg)	Part No
mm	Inch		Front Buttons							
			Flat Face	Concave Face	Convex Face					
152	6	8×16	6×16	4×14	/	35	2	150	20.5	RC6A -152
160	6 1/4	8×16	6×16	4×14	/	35	2	158	21.6	RC6A -160
165	6 1/2	8×18	6×16	4×14	/	35	2	163	22.3	RC6A -165
178	7	8×18	8×16	4×16	/	35	2	176	23.8	RC6A -178

RC 8A



Diameter		Gauge Buttons	No × Button diameter (mm)			Button angle°	Flushing holes	Shroud Diameter	Weight (kg)	Part No
mm	Inch		Front Buttons							
			Flat Face	Concave Face	Convex Face					
203	8	10×18	8×18	6×16	/	35	2	201	47.7	RC8A-203
210	8 1/4	10×18	8×18	6×16	/	35	2	208	48.3	RC8A-210
216	8 1/2	10×18	8×18	6×16	/	35	2	214	49.1	RC8A-216
229	9	10×19	10×18	6×16	/	35	2	227	52.0	RC8A-229

RC 10A



Diameter		Gauge Buttons	No × Button diameter (mm)			Button angle°	Flushing holes	Shroud Diameter	Weight (kg)	Part No
mm	Inch		Front Buttons							
			Flat Face	Concave Face	Convex Face					
300	11 13/16	16×19	20×16	4×16	12×18	35	2	298	152.4	RC10A-300
330	13	16×19	22×18	6×18	12×19	35	2	328	168.9	RC10A-330
345	13 9/16	16×19	24×18	6×18	12×19	35	2	343	179.1	RC10A-345
360	14 3/16	16×19	26×18	6×18	12×19	35	2	358	243.3	RC10A-360